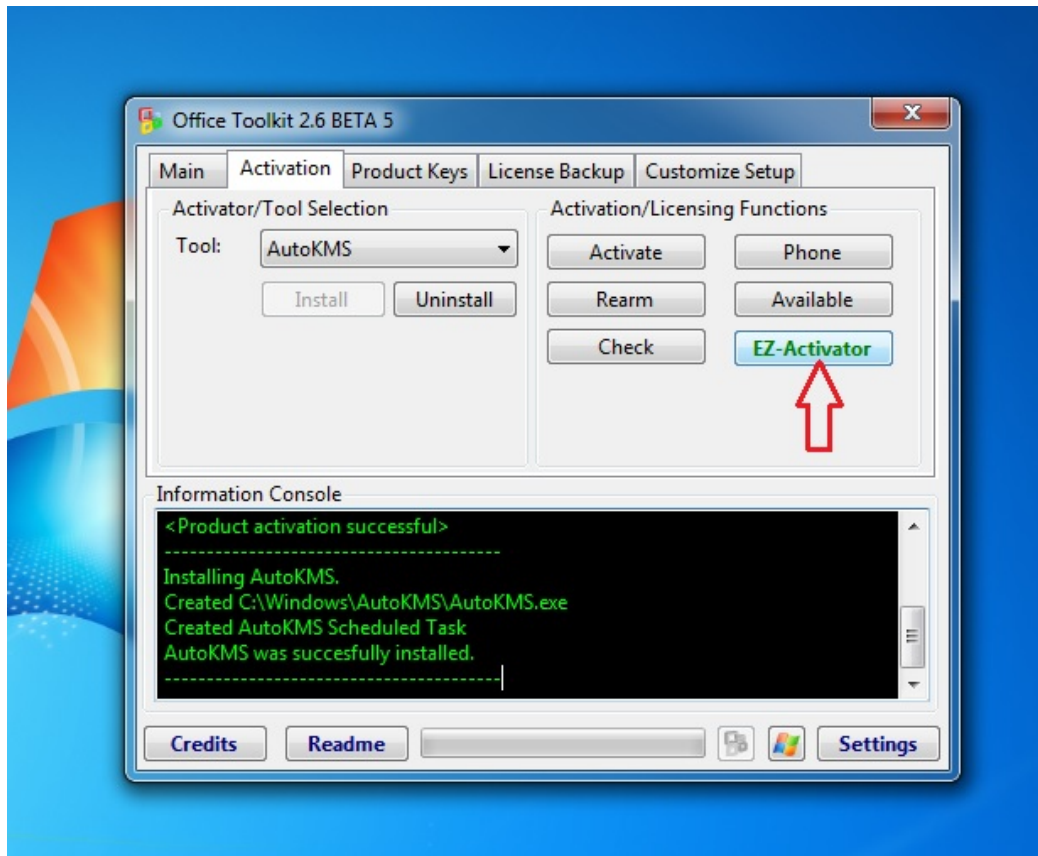

Office 2013 Toolkit And EZ Activator V2.5.6 TORRENT



DOWNLOAD: <https://byltly.com/2imixd>

Download

A: I did not have the same error when I updated the.net framework. There are several reasons why you could get this error, try updating.net framework and see if you still get this error. Q: Difference between javax.swing.JLabel and org.w3c.dom.Node? I was reading about Java Swing and about JLabels and Nodes. I read that Nodes were useful when you had to parse and analyse XML files. I was wondering why the JLabel has more functionality than a Node. To be specific, when you use a JLabel, you can change the size of the label and the text. What if I want to do something like that with a Node? To be even more specific, JLabels are basically JComponents. There are a number of things that you can do with JComponents that you cannot do with Nodes. This would include, but is not limited to, a number of different methods that allow a component to be resized, making a number of style changes to it, and you can see a complete list of them here. Of course, you can also use Nodes for parsing, but

they are really just a part of the DOM. Just keep in mind that you can only interact with a Node in a very limited way. A number of methods that exist in the Node class have either been deprecated or no longer work with most browsers. Most Node methods either return an empty string, do nothing, or throw an error. See the Mozilla docs for more info. You might also want to take a look at the JTree tutorial and its API. What could be the best way to keep a list of values from values of a list? I have two lists. A list of values and a list of elements that have value A = [value_1, value_2, value_3] B = [element_1, element_2, element_3, element_4, element_5] What I want to achieve is that I have all elements that have a value in A in a list. So if I have C = [element_1, element_2] I want to know that I have all elements that are present in both A and B what I did so far is: 82157476af

[FSX-P3D.-.RFSceneryBuilding.-Package.7.Airports](#)
[xforce keygen autocad 2016 64 bit windows 10521](#)
[Flowjo 10 Serial Number Crack 44](#)